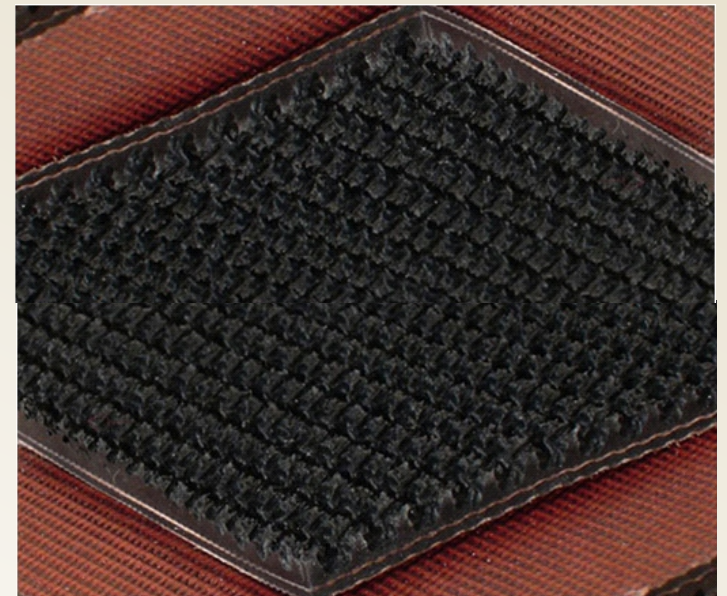


## Rough - Grip Top Conveyor Belt

The embossed rough high grips are widely used to increase friction force in various conveyor belts for high inclination, pattern transfer where sliding can be a problem. These provide a better grip on materials to prevent back slide of materials during conveyance. Manufactured using top grade raw material, these can also be customized as per the diverse industrial application needs. Used in transportation of light weight goods. Also on inclined surfaces. The special surface absorbs vibrations and impacts and also prevents material from slipping back.

### Features :

- Embossed type surface like wave top and fish tip
- Used to avoid slide back problem
- Hygienic/food grade embossed grip
- Trouble free service life
- High Adhesion
- Lower self weight
- Improved utilization
- Outstanding impact resistance
- Black cover for utility applications
- Available with bare back- bottom cover, to give excellent grip to the conveyor belt
- Provides excellent grip between belt top and packages, such as cartons, jute packages



### Application :

- Food industries
- Automobile Industries
- Paper industries

**Standard length** : 200 meters per roll

**Standard Width** : up to 1200 mm

**Bare Back** : Available

**Standard** : National & International standard (IS,AS,BIS,DIN etc.)